

PARTS LIST						
ITEM	QTY	PART NO.	PART DESCRIPTION	LENGTH	UNIT WT.	NET WT.
1	4	X-MPOST	SUPPORT POST FOR EQUIPMENT PLATFORM ICE BRIDGE KITS		92.99	371.97
2	5	GRS24-12	24" X 12' GRIP SPAN BRIDGE CHANNEL		90.63	453.14
3	2	X-COV10	10' ANGLE 4" X 4" x 1/4"	120 in	66.32	132.64
4	4	X-MPBP	BACKING PLATE FOR X-MPOST	8 in	8.48	33.90
5	8	X-232698	TRPD-HD SUPPORT PLATE - SITE PRO 1	29 1/2 in	8.72	69.77
6	8	SCP	CLAMP HALF, 1/2" x 5-3/4"		1.29	10.34
7	8	SHCM-T	CHAIN MOUNT TIGHTENER BRACKET	3 in	1.86	14.87
8	4	PC312	3-1/2" FENCE POST CAP		0.59	2.34
9	8	X-124312	1/2" X 2" X 2" ANGLE SPACER; WITH 9/16" HOLE	2 in	0.53	4.26
10	16	G58312	5/8" x 3-1/2" HDG HEX BOLT GR5		0.40	6.41
11	32	G58FW	5/8" HDG USS FLATWASHER	1/8 in	0.07	2.25
12	16	G58LW	5/8" HDG LOCKWASHER		0.03	0.42
13	16	G58NUT	5/8" HDG HEAVY 2H HEX NUT		0.13	2.08
14	16	X-UB1358	1/2" X 3-5/8" X 5-1/2" X 3" GALV U-BOLT		0.77	12.36
15	8	G1203	1/2" x 3" HDG HEX BOLT GR5 FULL THREAD	3 in	0.22	1.74
16	8	G1202	1/2" x 2" HDG HEX BOLT GR5	2 in	0.18	1.41
17	32	G12FW	1/2" HDG USS FLATWASHER	3/32 in	0.03	1.09
18	48	G12LW	1/2" HDG LOCKWASHER	1/8 in	0.01	0.67
19	56	G12NUT	1/2" HDG HEAVY 2H HEX NUT		0.07	4.01
20	20	X-JB8	J-BOLT, 3/8" X 8" X 6" THREADED		0.32	6.32
21	20	SQW38	3/8" SQUARE WASHER	2 in	0.29	5.79
22	20	G38LW	3/8" HDG LOCKWASHER		0.01	0.13
23	20	G38NUT	3/8" HDG HEAVY 2H HEX NUT		0.03	0.68
					TOTAL WT. #	1138.58

TOLERANCE NOTES

TOLERANCES ON DIMENSIONS, UNLESS OTHERWISE NOTED ARE:
SAWED, SHEARED AND GAS CUT EDGES (± 0.030")
DRILLED AND GAS CUT HOLES (± 0.030") - NO CONING OF HOLES
LASER CUT EDGES AND HOLES (± 0.010") - NO CONING OF HOLES
BENDS ARE ± 1/2 DEGREE
ALL OTHER MACHINING (± 0.030")
ALL OTHER ASSEMBLY (± 0.060")

PROPRIETARY NOTE:
THE DATA AND TECHNIQUES CONTAINED IN THIS DRAWING ARE PROPRIETARY INFORMATION OF VALMONT INDUSTRIES AND CONSIDERED A TRADE SECRET. ANY USE OR DISCLOSURE WITHOUT THE CONSENT OF VALMONT INDUSTRIES IS STRICTLY PROHIBITED.

DESCRIPTION

MEP 10' X 12' COVER

CPD NO.

DRAWN BY

ENG. APPROVAL

PART NO.

CLASS

SUB

DRAWING USAGE

CHECKED BY

DWG. NO.

87

02

CUSTOMER

BMC 11/22/2021

MPCOV1012

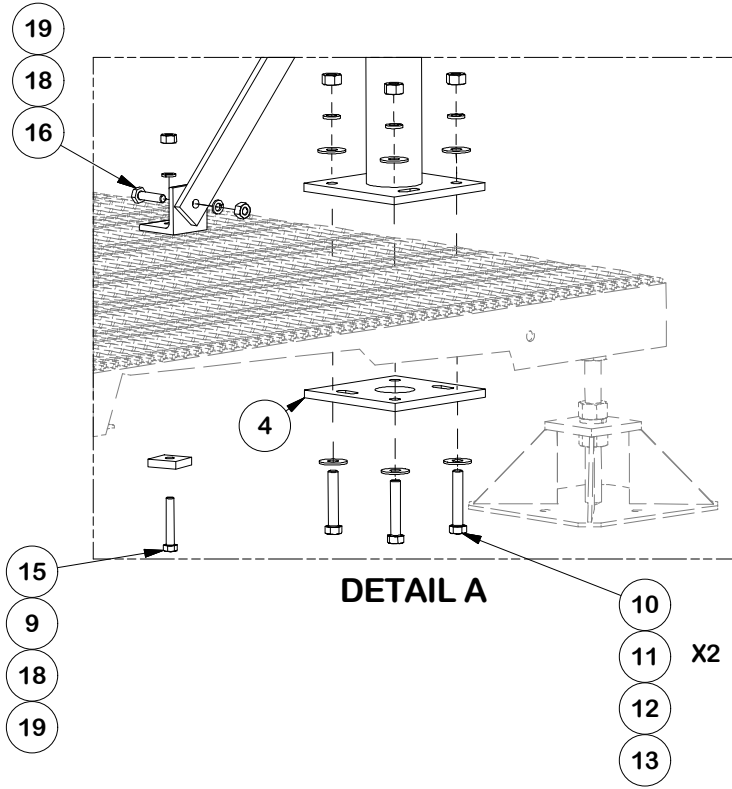
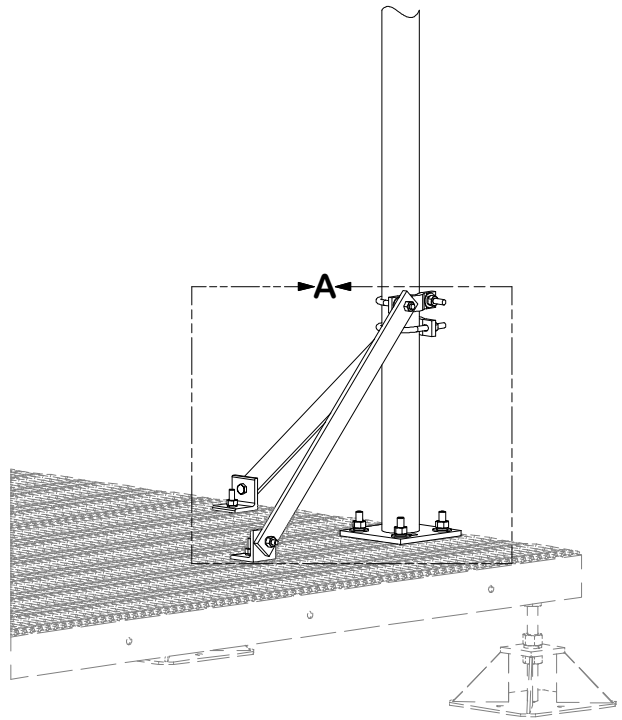
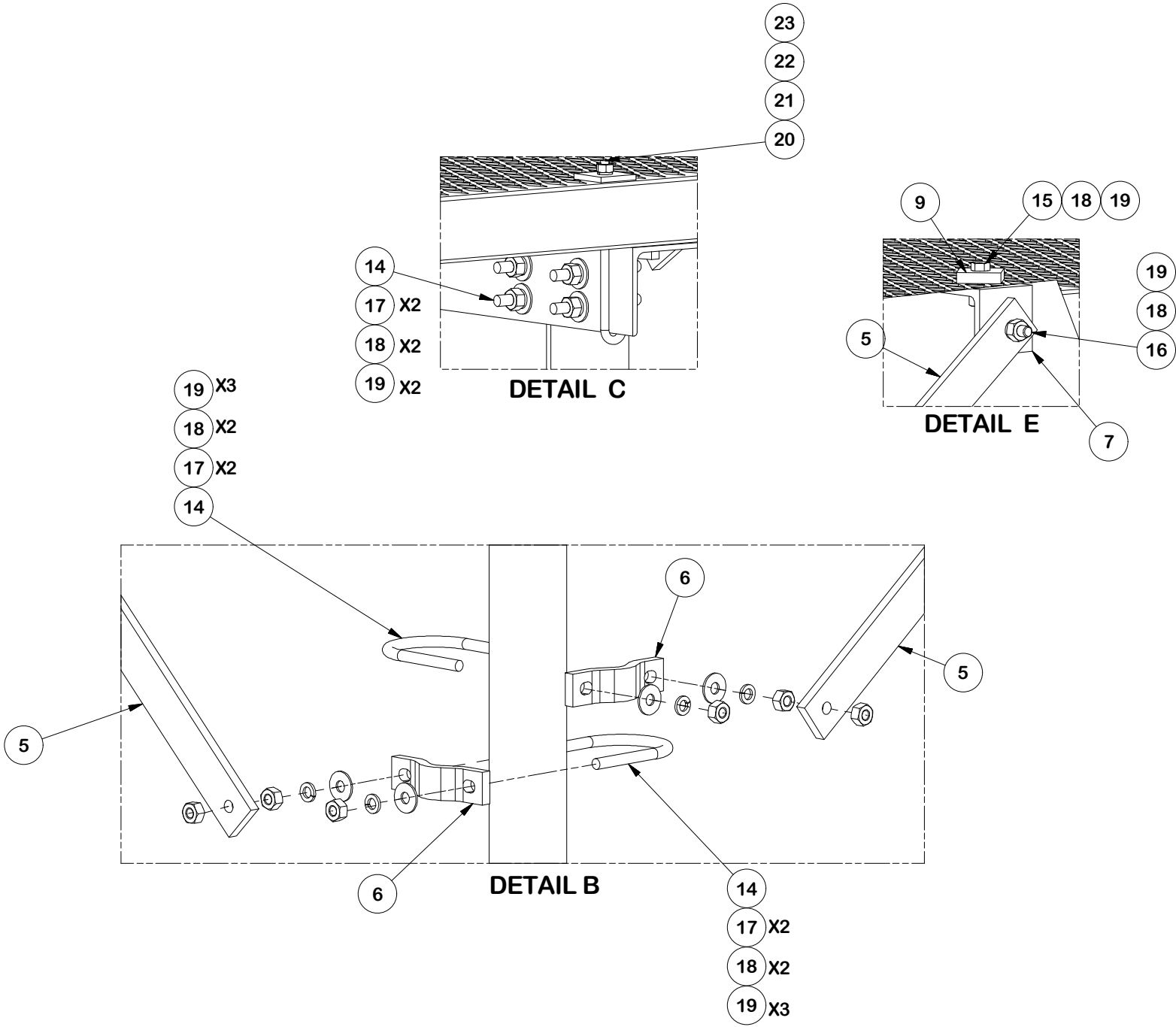
MPCOV1012



A valmont COMPANY

Engineering
Support Team:
1-888-753-7446

Locations:
New York, NY
Atlanta, GA
Los Angeles, CA
Plymouth, IN
Salem, OR
Dallas, TX



TOLERANCE NOTES

TOLERANCES ON DIMENSIONS, UNLESS OTHERWISE NOTED ARE:
SAWED, SHEARED AND GAS CUT EDGES ($\pm 0.030''$)
DRILLED AND GAS CUT HOLES ($\pm 0.030''$) - NO CONING OF HOLES
LASER CUT EDGES AND HOLES ($\pm 0.010''$) - NO CONING OF HOLES
BENDS ARE $\pm 1/2$ DEGREE
ALL OTHER MACHINING ($\pm 0.030''$)
ALL OTHER ASSEMBLY ($\pm 0.060''$)

PROPRIETARY NOTE:
THE DATA AND TECHNIQUES CONTAINED IN THIS DRAWING ARE PROPRIETARY INFORMATION OF VALMONT INDUSTRIES AND CONSIDERED A TRADE SECRET. ANY USE OR DISCLOSURE WITHOUT THE CONSENT OF VALMONT INDUSTRIES IS STRICTLY PROHIBITED.

DESCRIPTION

MEP 10' X 12' COVER

CPD NO.		DRAWN BY CMFL 11/22/2021		ENG. APPROVAL	
CLASS 87	SUB 02	DRAWING USAGE CUSTOMER		CHECKED BY BMC 11/22/2021	

SITE
PRO

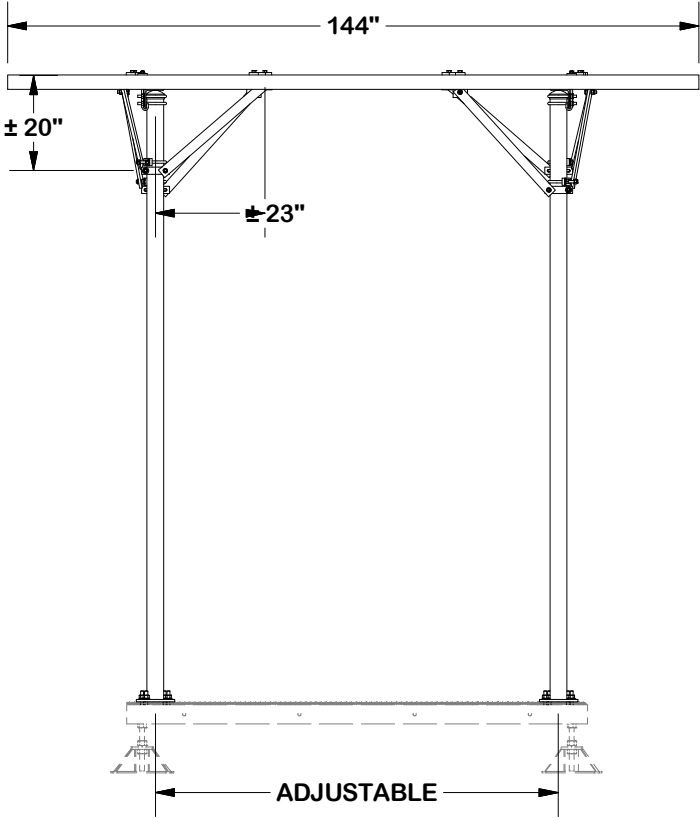
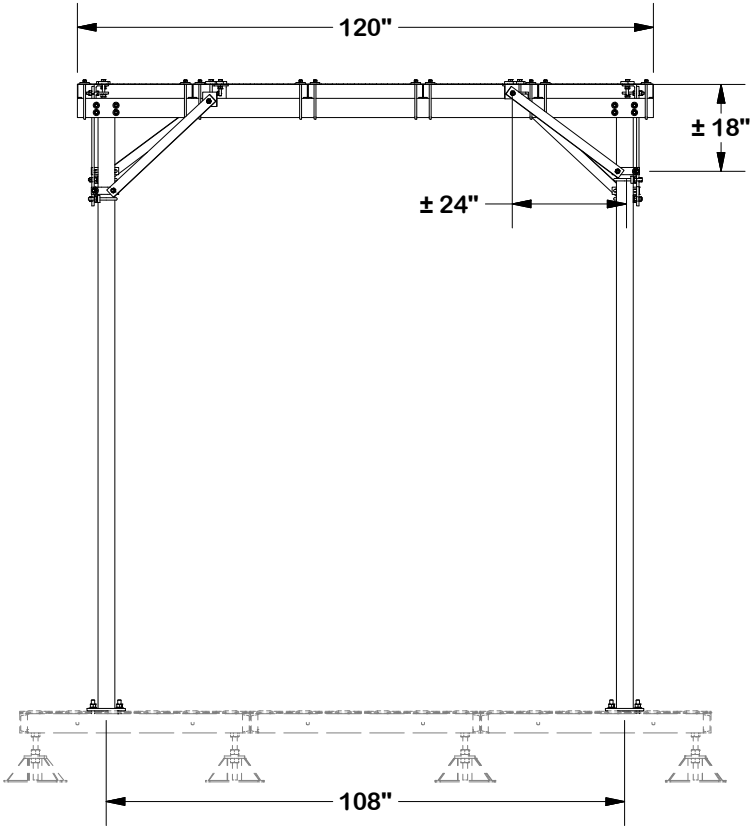
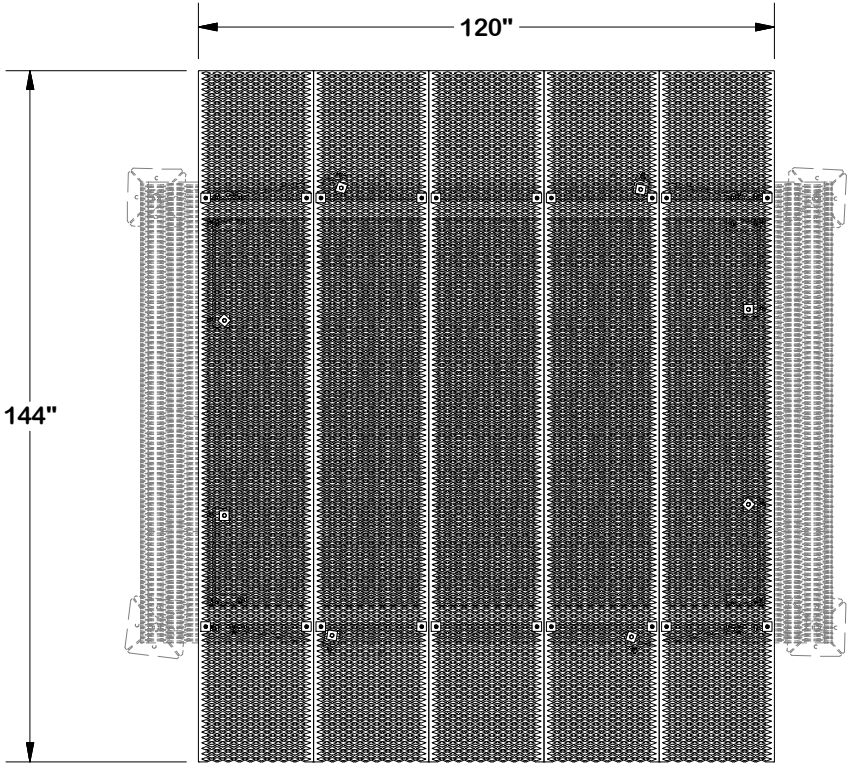
1

A valmont COMPANY

Locations:
New York, NY
Atlanta, GA
Los Angeles, CA
Plymouth, IN
Salem, OR
Dallas, TX

Engineering
Support Team:
1-888-753-7446

PART NO.	MPCOV1012
DWG. NO.	MPCOV1012



TOLERANCE NOTES

TOLERANCES ON DIMENSIONS, UNLESS OTHERWISE NOTED ARE:
SAWED, SHEARED AND GAS CUT EDGES ($\pm 0.030''$)
DRILLED AND GAS CUT HOLES ($\pm 0.030''$) - NO CONING OF HOLES
LASER CUT EDGES AND HOLES ($\pm 0.010''$) - NO CONING OF HOLES
BENDS ARE $\pm 1/2$ DEGREE
ALL OTHER MACHINING ($\pm 0.030''$)
ALL OTHER ASSEMBLY ($\pm 0.060''$)

PROPRIETARY NOTE:
THE DATA AND TECHNIQUES CONTAINED IN THIS DRAWING ARE PROPRIETARY INFORMATION OF VALMONT INDUSTRIES AND CONSIDERED A TRADE SECRET. ANY USE OR DISCLOSURE WITHOUT THE CONSENT OF VALMONT INDUSTRIES IS STRICTLY PROHIBITED.

DESCRIPTION

MEP 10' X 12' COVER

CPD NO.		DRAWN BY		ENG. APPROVAL	
		CMFL 11/22/2021			
CLASS	SUB	DRAWING USAGE		CHECKED BY	
87	02	CUSTOMER		BMC 11/22/2021	

SITE
PRO

1

A valmont COMPANY

Locations:
New York, NY
Atlanta, GA
Los Angeles, CA
Plymouth, IN
Salem, OR
Dallas, TX

Engineering
Support Team:
1-888-753-7446

PART NO.	MPCOV1012
DWG. NO.	MPCOV1012